



TECH 400 SD

From BARTEC

TPMS Diagnostics, Re-Learn Procedures, and vehicle programming
ALL IN THE PALM OF YOUR HAND!

Also checks
Key Fob and
other RF Signals!



Still Easy to Use!



Still Robust and Rugged!

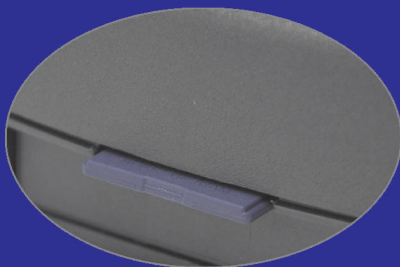


Still Programs EZ-sensor™

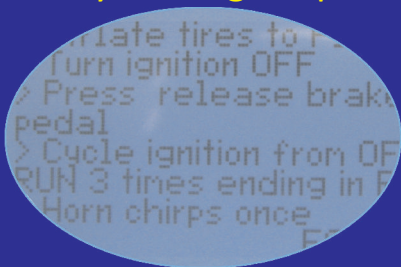
EZ-sensor™ is a trademark of Schrader International, Inc

Now offering EVEN GREATER FUNCTIONALITY!

Update **without** a
Computer or the
Internet!



Re-Learn Procedures
Right on the tool,
At your finger tips!



Raised key
Touch Pad for
Easier operation!



BR-WRT400SD

TOLL FREE 866-407-8767

BARTEC USA, LLC
www.bartecusa.com

Updates to the Tech400SD are free for the entire first year of ownership! *

**ONE TOOL -
THREE EASY STEPS!**

1



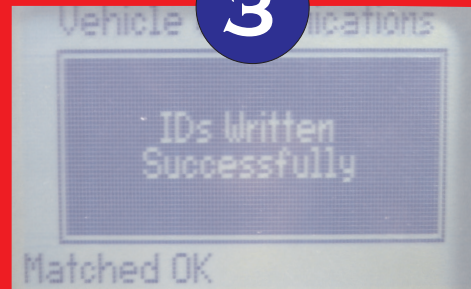
Capture Sensor ID

2



Connect to OBD

3



Program Sensor ID's

FEATURES:

- ▶ Large, easy to read display.
- ▶ Decodes and displays critical sensor data.
- ▶ Data includes: Sensor ID, PSI, Battery State, Temperature.
- ▶ Make-Model-Year Vehicle Menu System.
- ▶ Programs Sensor data directly to the vehicle.
- ▶ Long life Rechargeable Battery.
- ▶ Audit Mode - easily download TPMS Sensor Data.
- ▶ Print data from PC or Lap Top.
- ▶ Rugged design ideal for repair shops.
- ▶ Economical - 1 piece OBD Cable.
- ▶ Easily upgrade using the included USB cable.

BENEFITS:

- ▶ Single tool process - no extra activation tools are needed.
- ▶ Clears TPMS fault codes.
- ▶ TPMS programming process based on OE method.
- ▶ Displays Sensor part number for efficient replacement.
- ▶ Free software updates during the first year of ownership.
- ▶ Print out sensor status using Audit Mode.
- ▶ Lower cost to operate - OBD circuit is INTERNAL not part of the cable.



Tech400SD Kit Includes:

- Tech400SD Tool
- Activation Magnet
- OBD Cable
- Power Supply
- USB Cable
- Quick Start Guide
- CD User Guide
- Assembled in a Custom Case
- First Year's Access to the website

* Free software updates begin with tool registration on the website or mail-in card.

Distributed by:

SPECIFICATIONS:

Dimensions: 6.75 x 3.75 x 1.75
Case Material: Xenoy composite
Tool Weight: 23 ounces
Battery: Internal, rechargeable
Keypad: 7 Key
Display: OLED, 2.38 x 1.5, back lit
Interface: USB, and OBDII



Bartec USA, LLC

toll free **(866)407-TPMS**

www.bartecusa.com

Manufactured by Bartec - Specifications subject to change without notice - ©Bartec USA, LLC 2010